

1 2 3 4 5 6

A

B

C

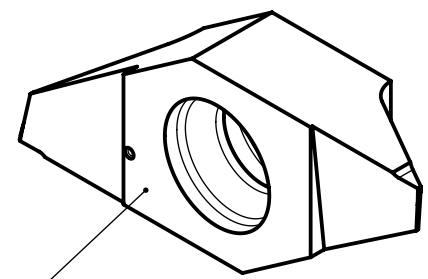
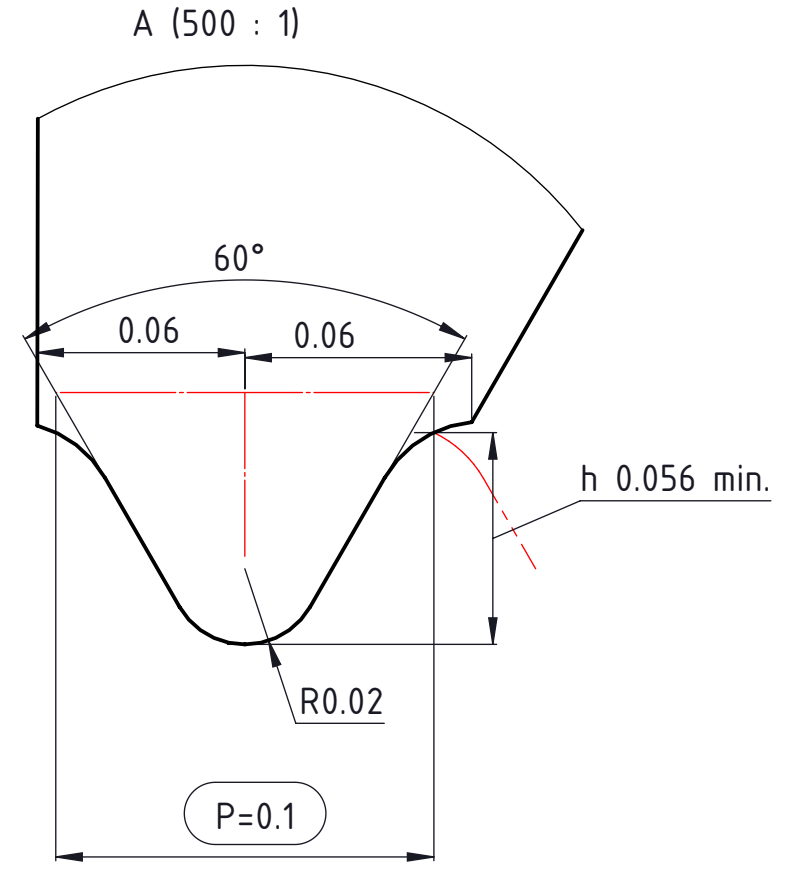
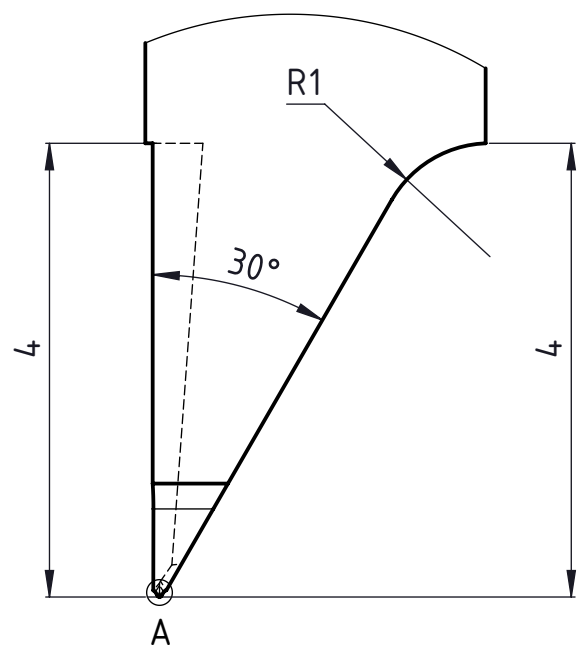
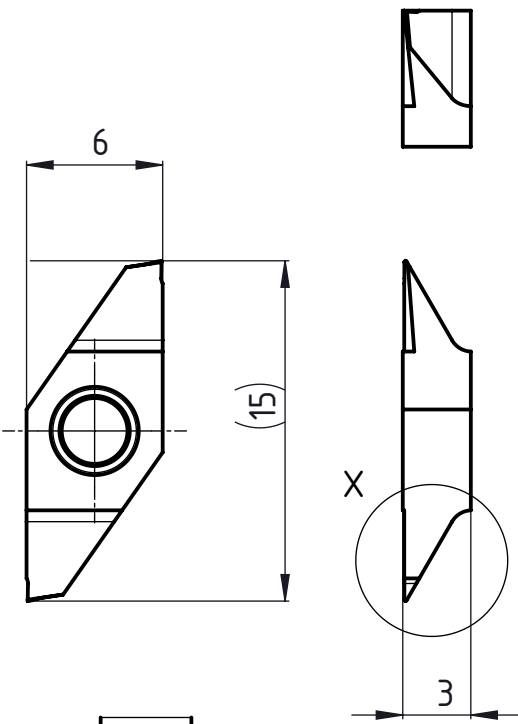
D

A

B

C

D



P0.1-60°

Linke Ausführung
Execution gauche
Left execution

Norm NIHS 06-02 SN 280 602 S0.40

A4-Kunde V7

Freigegeben von am T.Weilenmann am 16.12.2020
erstellt von am C.Fabozzi am 31.03.2020

Beschreibung multidec-CUT Wendepatte
Artikel Bezeichnung 1606-0.1-60 VP L

UTILIS <small>Tooling for High Technology</small>
Zeichnungsnummer CUT-938-01-08

A4 Index B