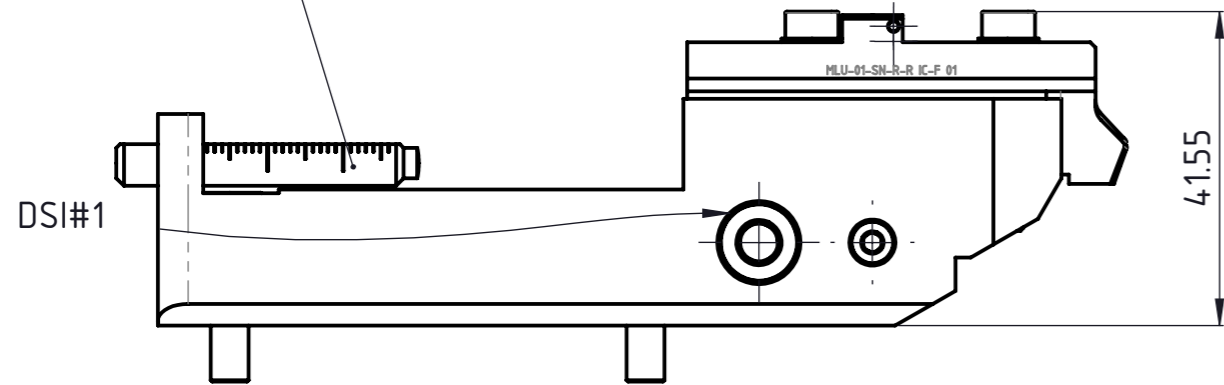
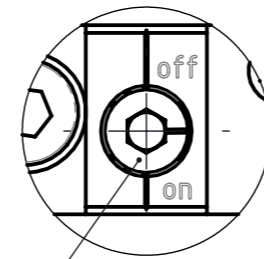


MLU-60400 AN
Artikel Nr. 117038



A (2 : 1)

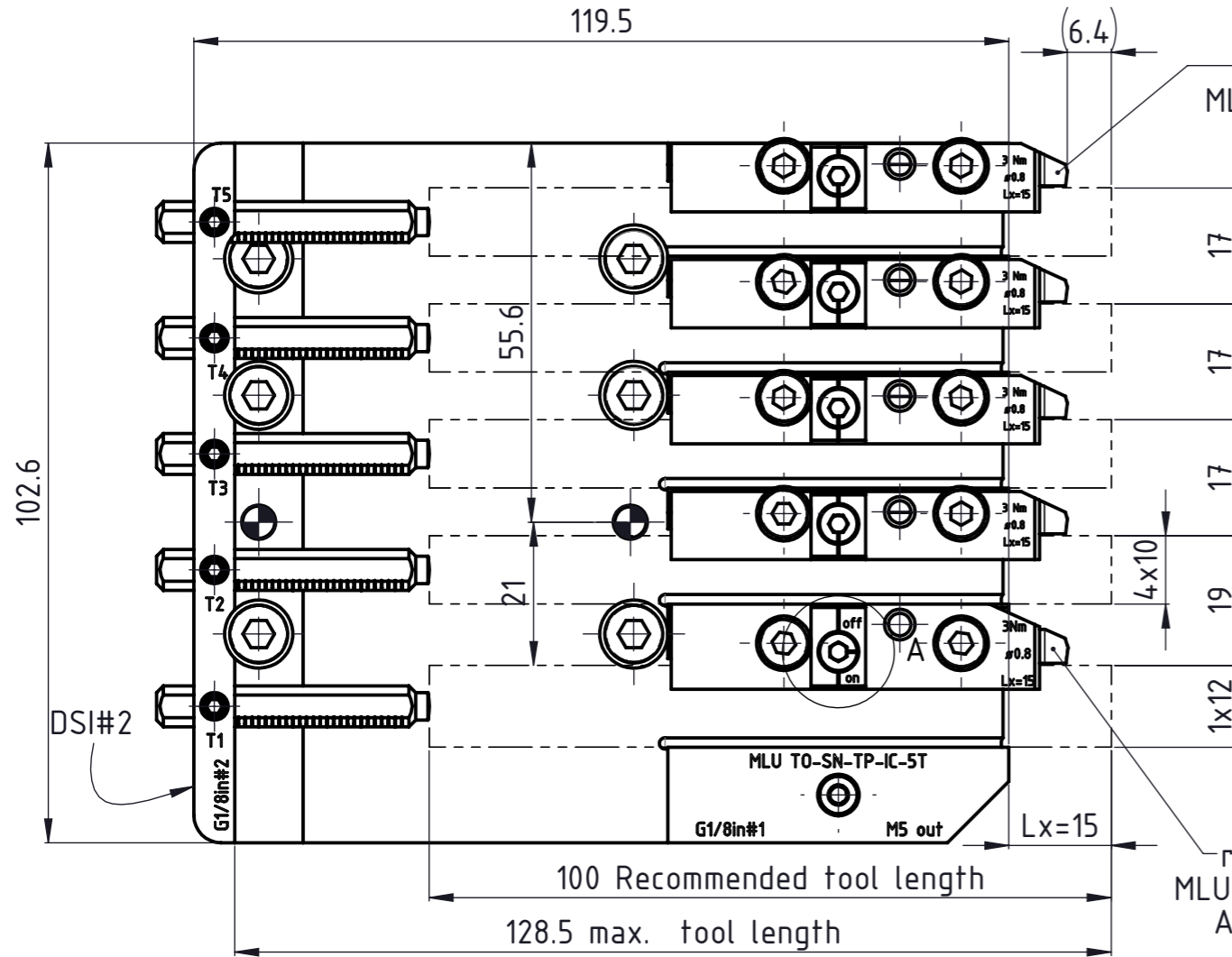


flow adjustable

119.5

(6.4)

rechts, droite, right
MLU-01-SN-R-R IC-F 02
Artikel Nr. 152586



rechts, droite, right
MLU-01-SN-R-R IC-F 01
Artikel Nr. 152587

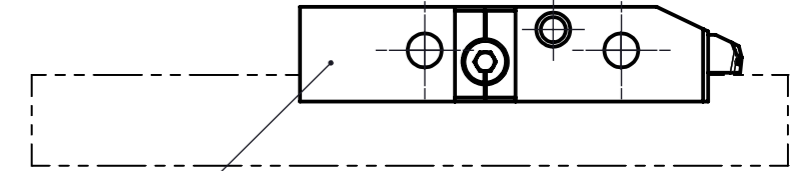
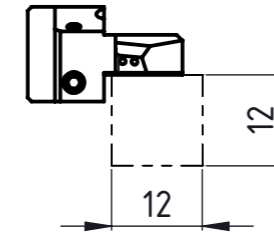
100 Recommended tool length

128.5 max. tool length

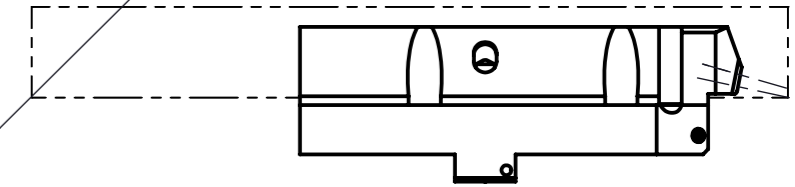
Lx=

Vorstandlänge des Werkzeuges für optimale Kühlung
Longueur d'outil pour un refroidissement optimal
Tool length for optimal cooling

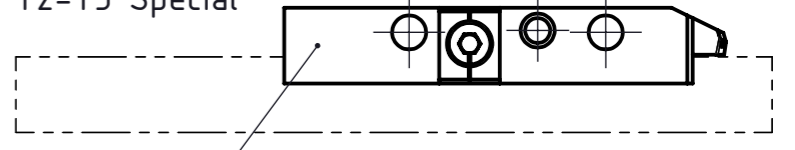
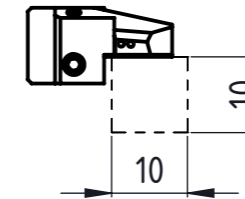
T1 Special



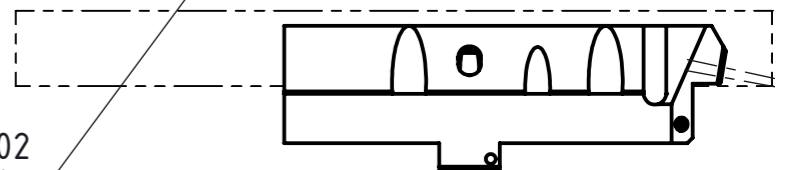
links, gauche, left
MLU-01-R-L IC-F 01
Artikel Nr. 194287



T2-T5 Special

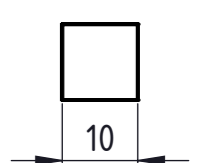
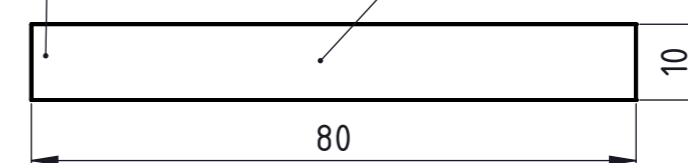


links, gauche, left
MLU-01-R-L IC-F 02
Artikel Nr. 194286



MLU DUD 1010080
Artikel Nr. 216221

3x im Lieferumfang enthalten
3x included



Type of machine	docking systems and sizes (DS)	Tool Size	Tools size
Tornos SwissNano 7	2xG1/8"	T1 12/12	T2-T5 10/10

Beschreibung
multidec-LUB Werkzeugplatte komplett

Artikel Bezeichnung
MLU TO-SN-TPC-IC-5T

Zeichnungsnummer
MLU-91-4-2

UTILIS
Tooling for High Technology

A3

Index
A