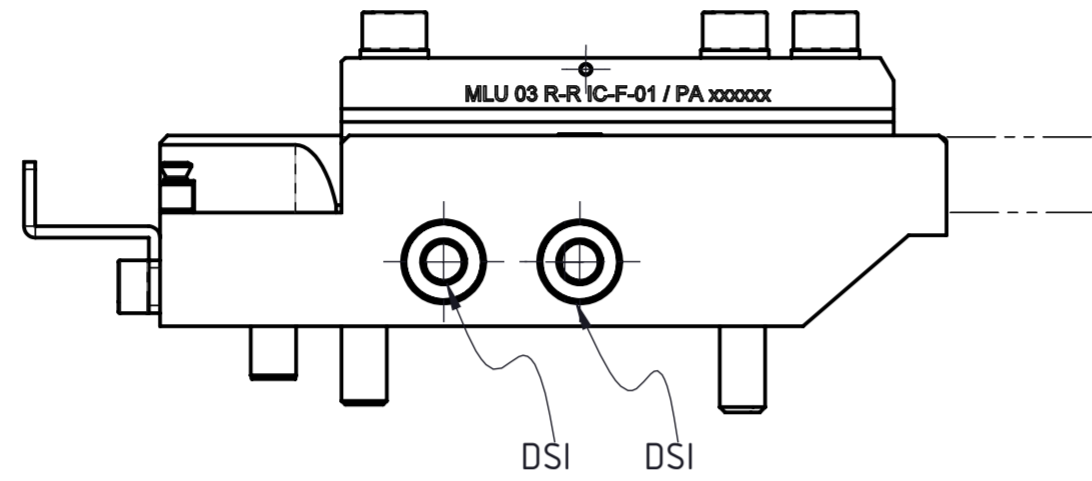
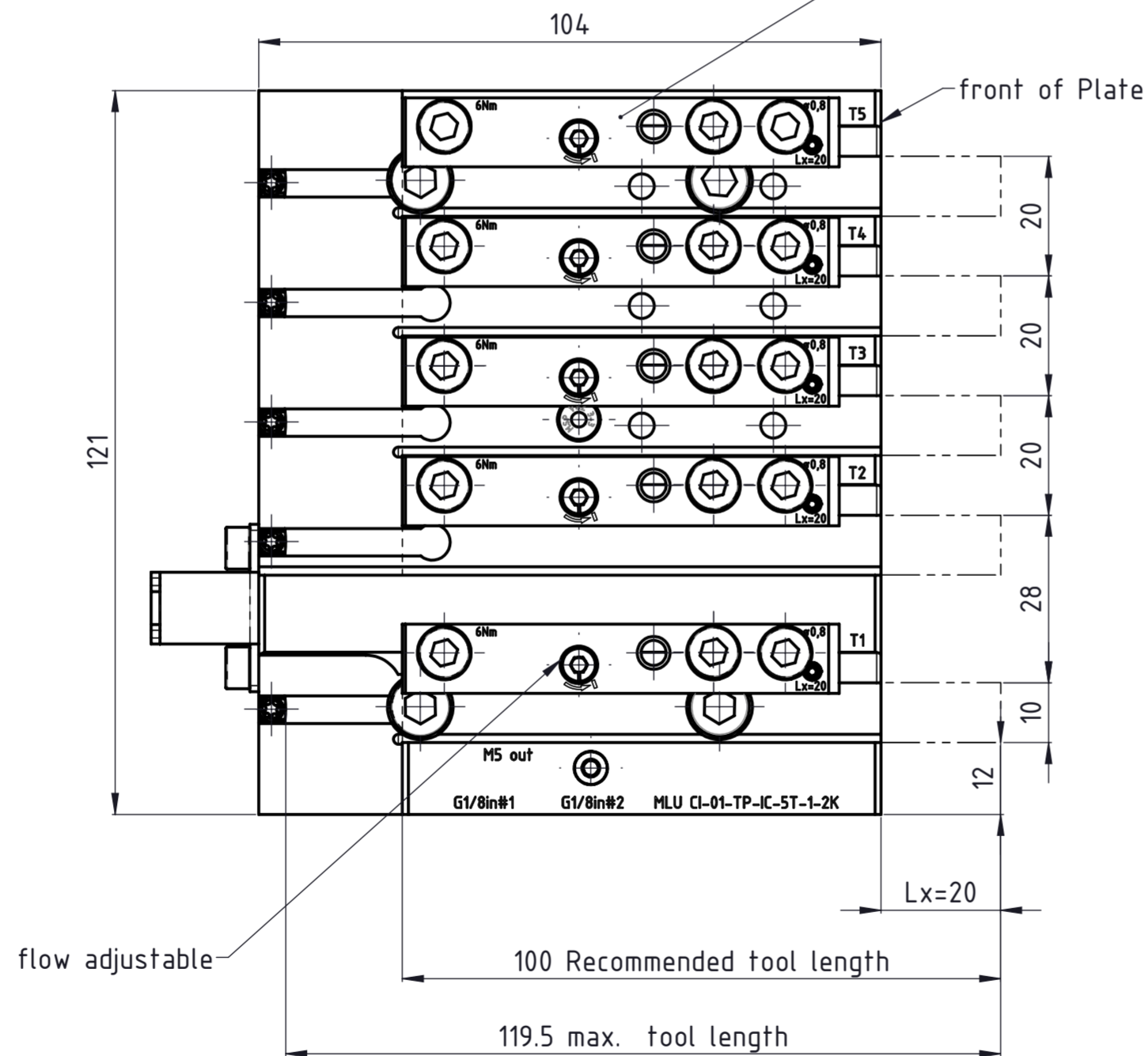
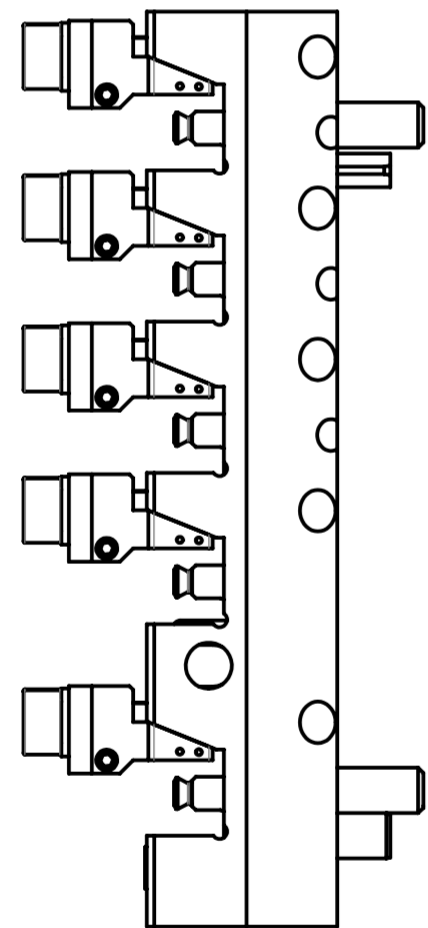


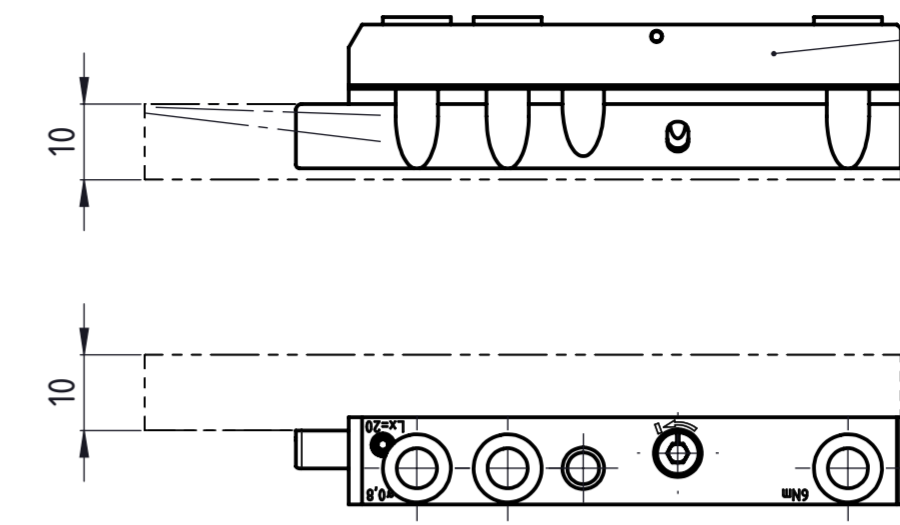
2 Cooling circuit
 in#1 out T1-T2
 in#2 out T3-T5
 1xM5-out (T1)



rechts, droite, right
 MLU 03 R-R IC-F-01
 Artikel Nr. 194291

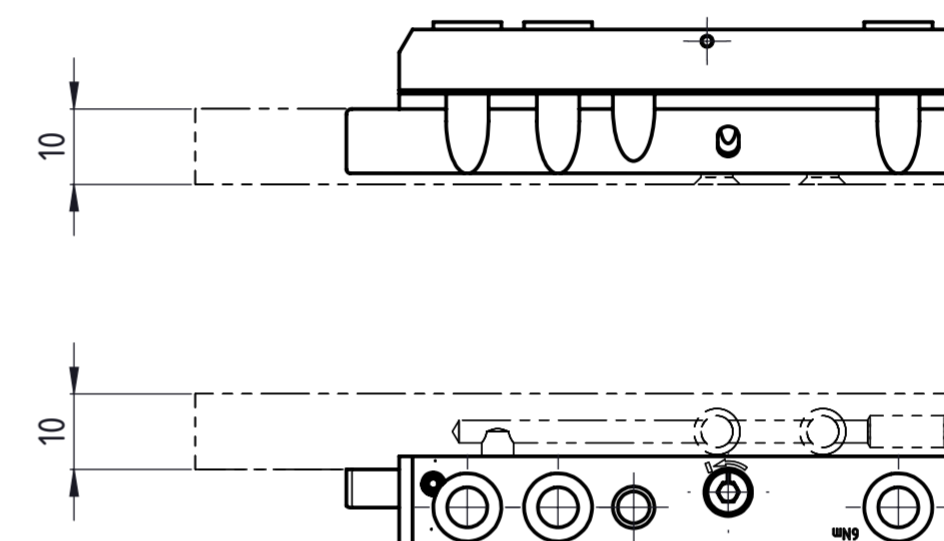
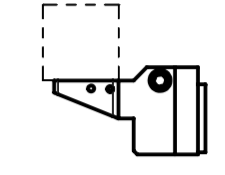


Ra 3,2 (✓) +0,2 -0,3

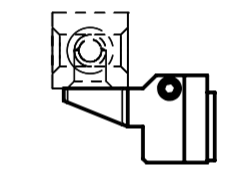


links, gauche, left
 MLU 03 R-L IC-F-01
 Artikel Nr. 194906

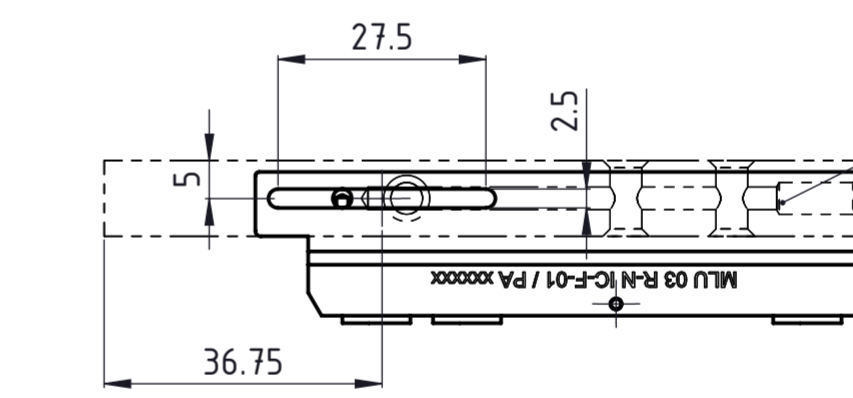
T1-T5 special



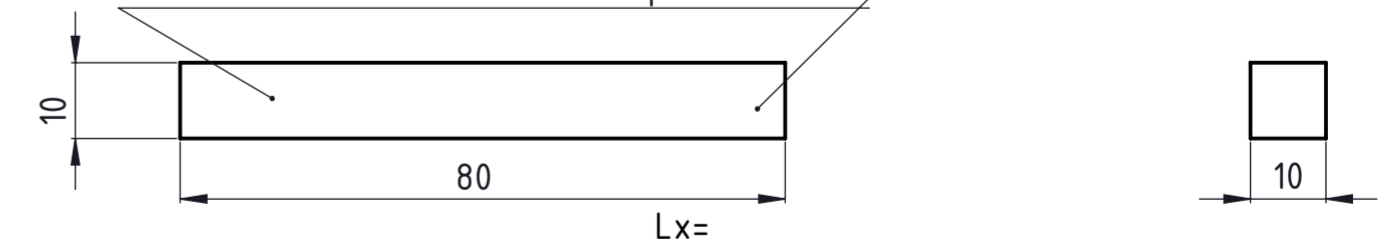
T1-T5 special



Kühlmittel übergabe an Werkzeug
 Coolant transfer to tool
 MLU 03 R-N IC-F-01
 Artikel Nr. 551442



MLU DUD 1010080
 All positions must be equipped with a holder!
 Placeholder for not in use positions
 3x im Lieferumfang enthalten
 3x included



Vorstandlänge des Werkzeuges für optimale Kühlung
 Longueur d'outil pour un refroidissement optimal
 Tool length for optimal cooling

Original Spannkeile können verwendet werden
 Les cales de serrage d'origine peuvent être utilisées
 Original clamping wedges can be used

Type of machine	Platte ref.	docking systems and sizes (DS)	Tools size
Citizen M16	GTF5210	2xG1/8"	T1-T5 10/10

Beschreibung
 multidec-LUB Werkzeugplatte komplett

Artikel Bezeichnung
 MLU CI-01-TP-IC-5T-2K

Zeichnungsnummer
 MLU-99-1-3

UTILIS
 Tooling for High Technology
 Format A2 Index -